



Dodge County Historical Society

1643 N. Nye Ave. / P.O. Box 766 / Fremont, NE / 68025 / 402.721.4515
www.maymuseum.com

2019 Board of Directors

Julie O'Hanlon, president
Judy Ekeler, 1st vice pres.
Lori Dahl, 2nd vice pres.
Mary Buller, secretary
Bill Wagner, treasurer
Cathy Driver, Ames
Renee Bunck, Fremont
J.L. Doksansky, Fremont
Barbara Gehringer, Fremont
Linda Hasebroock, Fremont
Jim Manhart, Fremont
Jane Petersen, Fremont
Joanne Thietje, Fremont
Sherry Jarose, Nickerson
Deanna Wolf, North Bend
Nona Wiese, Scribner
Alex Meyer, Snyder
Joyce Uehling, Uehling
Russ Uehling, Uehling

Jeff Kappeler, director
Pam Pettitt, office manager
Joyce Winfield, newsletter ed.

Newsletters combine mailings for DCHS and ENGS



Collaborating on the Dodge County Historical Society (DCHS) newsletter and the Eastern Nebraska Genealogical Society (ENGS) newsletter are (front): Jeff Kappeler, May Museum director, and Joyce Winfield, DCHS newsletter editor. Earl Underwood is ENGS president and Renee Bunck is the ENGS newsletter editor.

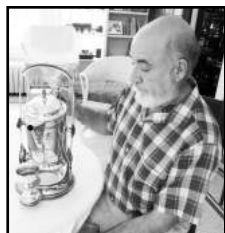
This issue of the Dodge County Historical Society newsletter marks the first that will be mailed together with the Eastern Nebraska Genealogical Society (ENGS) newsletter.

People receiving the two separate newsletters do not have to be members of both organizations. Part of the decision to combine

Newsletters, continued on p. 2

Director's Column

Jeff Kappeler



Dodge County Historical Society (DCHS) newsletter readers can look forward to a rare bonus in that you will be receiving copies of this newsletter and one from the Eastern Nebraska Genealogical Society (ENGS). There is no additional expense for you.

The ENGS newsletter will be covering more county history. Both newsletters will be mailed simultaneously. Since ENGS is now headquartered at the DCHS/May Museum, it makes sense to combine these efforts. Both newsletters will be mailed quarterly. Monthly newsletters from ENGS will now be discontinued and only the quarterly newsletter will be mailed.

Note in the Calendar of Events for ENGS meeting times. Visitors are welcome.

Calendar of Events

Mon., March 11 and
Wed., March 13

Day in the Past (for)
Dodge County 4th graders

Mon., March 11 and
Mon., April 8, 7 p.m.

ENGs meeting
Library open at 6 p.m. for research

Tues., April 23, 2 p.m.
Docent Tea

Wed., April 24
Museum Opens
for the Season

Sat., May 4, 9 a.m.-noon
Plant Sale

Fri., June 14
Museum Fundraiser

Memorials & Gifts

In Memory of Trudy Kluver
Jim & Patty Manhart

In Memory of Tom Milliken
Jack & Judy Ekeler

In Memory of Russ Lang
Jeff Kappeler

In Memory of Melva Penwell
Mr. & Mrs. Frank Sutterlin

In Memory of Mildred
(Millie) Meyer
P.E.O. Chapter AJ

Support Annual Plant Sale

The 20th annual Plant Sale at the Museum will be held on Sat., May 4 from 9 a.m.-noon. Rain date is Sun., May 5 from 1-4 p.m.

Jan Lutz said buyers have commented that they like the variety of perennials for sale. Homeowners with prolific gardens can help contribute to that variety. Jan said the plants must be brought to the Museum and they should not be, for example, the typical hosta. Cutoff date for contributions is Tues., April 23. Please call Jan at 402.727.5967 for further information.

Regular buyers at the Plant Sale are Gary and Kathy Overfield. Gary said they try not to miss the Plant Sale and the opportunity to pick up different perennials. "The fact that many of the plants are from the Museum's garden means that we get a chance to take a little bit of that beautiful space home to our own garden."

Gary added that walking through the Museum garden gets Kathy and him inspired for the new growing season.

Newsletters, continued from p. 1

the mailings focused on the cost of postage, said Jeff Kappeler, May Museum director. A cheaper bulk-mailing rate is available when a minimum of 200 pieces of the same item is mailed.

The ENGS library materials were moved last May to the May Museum basement. Also, the monthly meetings (second Monday) are held at the Museum.

Renee Bunck is editor for the ENGS newsletter and Joyce Winfield is editor for the Dodge County Historical Society newsletter.

Speaker focuses on women's suffrage movement

The Dodge County Historical Society, together with the Lewis-Clark Chapter, Daughters of the American Revolution, will recognize an important anniversary on Tues., March 5.

Bisson Best will speak on the women's suffrage movement at 7 p.m. in the Midland University dining hall. The dining hall is located just north of Sinai Lutheran Church, 9th & Pebble.

Doris Stevens from Omaha was a leader of the movement. Best has conducted extensive research on Stevens, including her participation in the Silent Sentinels vigil at the White House when Woodrow Wilson was president.

This year marks the 100th anniversary of the Nineteenth Amendment to the United States Constitution, which gave women the right to vote.

Best has a law degree and serves as director of the Legal Studies Program at the College of Saint Mary in Omaha. Her presentation is free and open to the public.

Fremont Area Big Give

Again this year, the May Museum will participate in the Fremont Area Big Give, spearheaded by the Fremont Area Community Foundation. People can contribute on Tuesday, May 7 during this 24-hour online challenge that raises unrestricted dollars for various nonprofits in the area.

Donors also can give at the Fremont Area Community Foundation office at 1005 E. 23rd St., Suite 2.

Last year, \$355,000 was raised. The fremontareabiggive.org website states, May 7 "is a day to celebrate the power of philanthropy and support the good work of nonprofits who help make the Fremont area a special place to live, work and thrive."

Christmas Open House



Over 150 people attended the 2018 Christmas Open House, according to Jeff Kappeler, May Museum director. Visitors enjoyed the springerle cookies that Joe Dickmeyer baked. Springerle is an anise-flavored German cookie made using decorative molds or rolling pins. Joe is pictured above with his wife, Cheryl. Jeff also thanked Kate Clausen and Richard Rader for their contributions to the Open House. Kate is the great-great-granddaughter of Anna (Jepson) Rix, who was a Tea Maid for Ray and Annie Nye. Kate, 8, distributed goodies to visitors. Richard played the piano, filling the Museum rooms with festive holiday tunes.

Where in the World is . . .

“ABC and D is for Dodge County” is the new two-year exhibit at the May Museum. Visitors will see collections from earlier school days.

Slates and pencil boxes, ink wells and bottles, lunch pails and penmanship books, school bells and desks are all on display.

While studying geography, teachers could use globes, maps and atlases as visual aids.



The Global Map (upper left) was created in 1940 by Global Map Company in Minneapolis. The map shows two flat hemispheres that rotate, adjoining each other in order to show the shortest airline distances between points.

Scarborough's New Standard Atlas of the World (upper right) was published in 1904 by The Scarborough Co. in Indianapolis.

A box of Drawing Teacher Geography stencils (lower left) includes not only the entire United States but also U.S. regions and other countries.



A.H. Andrews was a school furniture powerhouse but also produced globes and other school supplies. Many had cast-iron bases (upper left). The George F. Cram Company was incorporated in 1921 and began manufacturing globes in 1932. This globe (back center) is an example of a floor model. Some globes from the 1940s had wooden frames (upper right). Smaller globes (front center) with wire stands from the 1930s could have been used at individual desks.



School items with cover globe images include: Globe Images (upper left), an end-of-year souvenir from the teacher; Geographical Series Spelling Tablet (upper right); and Globe composition book (lower right).